



OWNERS MANUAL

SAFETY, OPERATION & GENERAL MAINTENANCE



Subterranean Parking Lifts

by

Autoquip

P.O. Box 1058 • 1058 West Industrial Avenue • Guthrie, OK 73044-1058 • 888-811-9876
405-282-5200 • FAX: 405-282-3302 • www.autoquip.com

830VLOM

Version 1.0
February, 2010

© 2010 AUTOQUIP CORPORATION

This manual and the information herein is the sole property of Autoquip Corp. and shall not be reproduced without written consent by Autoquip

TABLE OF CONTENTS

Responsibility of Owners/Users	4
Safety Signal Words	5
General Safety Practices	6
Operator Safety Rules	9
Safety Label Identification	11
Operating Instructions	13
General Maintenance	17
Replacement Parts	22
Troubleshooting	23
Limited Warranty Statement	25

IMPORTANT

Please read and understand this manual prior to operation of your Subterranean Parking Lift. Failure to do so could lead to property damage and/or serious personal injury. If you have any questions about the safety or operation of this equipment, please call *Autoquip Corporation* at 1-888-811-9876 or 405-282-5200.

Please record the following information and refer to it when calling your dealer or Autoquip.

Model Number: _____ **Serial Number:** _____

Installation Date ____/____/____

RESPONSIBILITY OF OWNERS/USERS

OPERATORS

Only trained and authorized personnel shall be permitted to operate the lift.

BEFORE OPERATION

Before using the lift, the operator shall have:

- Read and/or have explained, and understood, the manufacturer's operating instructions and safety rules.
- Inspect the lift for proper operation and condition. Any suspect item shall be carefully examined and a determination made by a qualified person as to whether it constitutes a hazard. All items not in conformance with Autoquip's specification shall be corrected before further use of the lift.

DURING OPERATION

The lift shall only be used in accordance with this manual.

- Do not overload the lift.
- Ensure that all safety devices are operational and in place.

INSPECTION & MAINTENANCE

The lift shall be inspected & maintained in proper working order in accordance with Autoquip's operating/maintenance (O&M) manual and safe operating practices.

REMOVAL FROM SERVICE

Any lift not in safe operating condition such as, but not limited to, excessive leakage, missing pins, or fasteners, any bent or cracked structural members, cut or frayed electric, hydraulic, or pneumatic lines, damaged or malfunctioning controls or safety devices, etc. shall be removed from service until it is repaired to the original manufacturer's standards.

REPAIRS

All repairs shall be made by qualified personnel in conformance with Autoquip's instructions.

MODIFICATIONS OR ALTERATIONS

Modifications or alterations to industrial lifting equipment shall be made only with written permission of Autoquip. Autoquip does not foresee and does not anticipate unauthorized modifications, and these changes or alterations are grounds for voiding all warranties.

READ THIS BEFORE YOU GET STARTED

SAFETY SIGNAL WORDS

SAFETY ALERTS (Required Reading!)

The following SAFETY ALERTS are intended to create awareness of owners, operators, and maintenance personnel of the potential safety hazards and the steps that must be taken to avoid accidents. These same alerts are inserted throughout this manual to identify specific hazards that may endanger uninformed personnel. Identification of every conceivable hazardous situation is impossible. Therefore, all personnel have the responsibility to diligently exercise safe practices whenever exposed to this equipment.



DANGER!

Identifies a hazardous situation which, if not avoided, will result in death or severe personal injury.



WARNING!

Identifies a hazardous situation which, if not avoided, could result in death or serious personal injury.



CAUTION!

Identifies a hazardous situation which, if not avoided, may result in minor or moderate personal injury.

NOTICE !

Identifies a potentially hazardous situation which, if not avoided, may result in property or equipment damage.

READ THIS BEFORE YOU GET STARTED

GENERAL SAFETY PRACTICES



WARNING!

ABSOLUTELY NO RIDERS! Parking Lifts are not vehicle elevators and do not meet the requirements of ASME A17.1 – *Safety Code for Elevators and Escalators*. Parking lifts are designed for the sole purpose of transporting vehicles between floor elevations. At no time should it be used to transport people. Death or serious injury could result.



DANGER!

High voltage! Repairs should only be performed by a qualified service/control technician.



DANGER!

Never go under a platform! To avoid personal injury or death, always be sure the load has been removed from the platform and that it has been blocked from underneath. See “Blocking Instructions” section.



DANGER!

Only qualified service personnel should perform all maintenance and repair procedures beyond general maintenance items.



DANGER!

Be sure of equipment stability. To avoid personal injury or death, check for stability. If the unit seems unstable, do not operate! Contact *Autoquip* immediately!

READ THIS BEFORE YOU GET STARTED

GENERAL SAFETY PRACTICES



DANGER!

Secure platform and cylinders. Do not remove or disconnect the power unit unless the platform and cylinders have been secured and all hydraulic pressure has been relieved. See “Blocking Instructions” section.



WARNING!

Never run the unit with the gates or doors open. Do not operate unit with doors open or with the interlocks or other safety devices and sensors “defeated” (bypassed)! Serious injury or death could result.



WARNING!

Velocity fuse lock-up requires factory help. Contact your local Vehicle Lift representative or call Autoquip Service Department if the lift will not lower because the hydraulic velocity fuses lock up!



WARNING!

Secure unit before making static inspections. Make sure the platform is fully lowered and the power is turned off (disconnected at the safety disconnect switch) before performing static inspections. Place signs at all gates, doors, controls, etc. indicating the system is temporarily out of service for routine maintenance per OSHA requirements for Lock-Out, Tag-Out.



WARNING!

Never operate unit when parts are defective. Do not operate this equipment when damaged, substandard or defective parts are in use! Contact an Autoquip Service Representative to rectify all such situations.

READ THIS BEFORE YOU GET STARTED

GENERAL SAFETY PRACTICES



WARNING!

Use high pressure hydraulic components only. Never use fittings or hoses that are not properly rated for 3,000 psi service.



WARNING!

Use approved or prescribed procedures only. If any procedure prescribed in this manual cannot be followed or adhered to for any reason, IMMEDIATELY cease what is being done and contact an Autoquip Service Representative for assistance. Autoquip can not foresee the possible misuses of this equipment caused as a result of not following prescribed installation, operation, and maintenance procedures.

NOTICE !

Use appropriate fluids. Do not use automatic transmission fluid (ATF), hydraulic jack oil, hydraulic fluids, or brake fluids in the power unit or hosing system. Use 5W30 motor oil or other approved fluids only.

NOTICE !

Keep power unit filled! Do not run the hydraulic power unit dry. Damage to the pump and motor may result.

NOTICE !

Do not operate motor at relief pressure. The motor should not be operated for more than a few seconds when the unit is operating at relief pressure. Longer running times could result in damage to the pump.

READ THIS BEFORE YOU GET STARTED

OPERATOR SAFETY RULES



WARNING!

Failure to follow these rules may result in serious injury or death.

- 1. Never allow children or adolescents to operate the Parking Lift.** No one under 18 years of age should be allowed to operate this equipment.
- 2. To avoid accidents and injury, all operators must first read and understand this manual.** It is unsafe for any person, regardless of age or experience, to operate this equipment without first learning the safety rules.
- 3. Protect children and visitors, their safety is your responsibility.** Keep children and unfamiliar persons away from the lift during operation. When not in use, **remove the key** and store it in a safe place away from the lift and out of the reach of children. **Do not share your authorization code** for the digital keypad with unauthorized operators.
- 4. Instruct children of the dangers of unauthorized use.** This equipment is powerful and could cause severe injury or death if used by anyone but responsible adults!
- 5. Keep children away from the garage floor opening.** This opening is extremely dangerous for small children, even when adults are present! Children are unaware of the dangers and can step into floor openings. **The lift should never be left unattended in any other position other than fully raised or fully lowered – to minimize exposure to an opening in the floor.**
- 6. Absolutely no riders on this equipment!** Any person riding the platform is liable to become caught between the lifting platform and the garage floor opening. Riding the platform is extremely dangerous and presents **Falling, Crushing, and Amputation** hazards.
- 7. Always stay clear of the lift during operation.** Stand well back to avoid falling objects, contacting moving parts, or being crushed. **NEVER stand beneath the platform – whether it is moving or not.**
- 8. Always LOOK to make sure no one is standing near or below the lift before lowering the lift platform.** Utilize the surveillance camera provided to observe all areas beneath and around the lift at the lower level which are outside the operator's line of site. **NEVER** disconnect or disable the platform-in-motion audible alarm.

READ THIS BEFORE YOU GET STARTED

OPERATOR SAFETY RULES

9. **Never attempt to lift or lower vehicles that are overhanging the lift platform.** You must ensure that all parts of the vehicle are within the footprint of the platform in order to avoid vehicle damage and/or causing the vehicle from becoming unstable and falling from the lifting platform onto bystanders below.
10. **Never lift or lower objects that are unstable, can tip over, or roll off the lift carriage.** Ensure that all vehicles transported are in gear (Not “neutral”), have parking brakes engaged, or are otherwise prevented from rolling off the platform during operation.
11. **Install adequate lighting in your basement.** You can improve basement safety by improving visibility with extra lighting.
12. **Do not exceed the load ratings of this lift.** This lift is designed to lift and/or support personal vehicles with normal axle loads and weight distributions for such (approximately a 60/40 difference from front to back). To overload the lift is to risk damage to the structure and the instability of load being transported.
13. **Do not operate this equipment with damaged, substandard, defective, or missing parts.** Contact a local Autoquip service representative if a deficiency is found.
14. **Do not operate this parking lift with doors into the lift area open or with the interlocks or other safety devices “defeated” (bypassed).**

LABEL IDENTIFICATION

Make sure the following safety labels are in place and legible to ensure adequate safety warning of authorized operators and maintainers of this equipment.

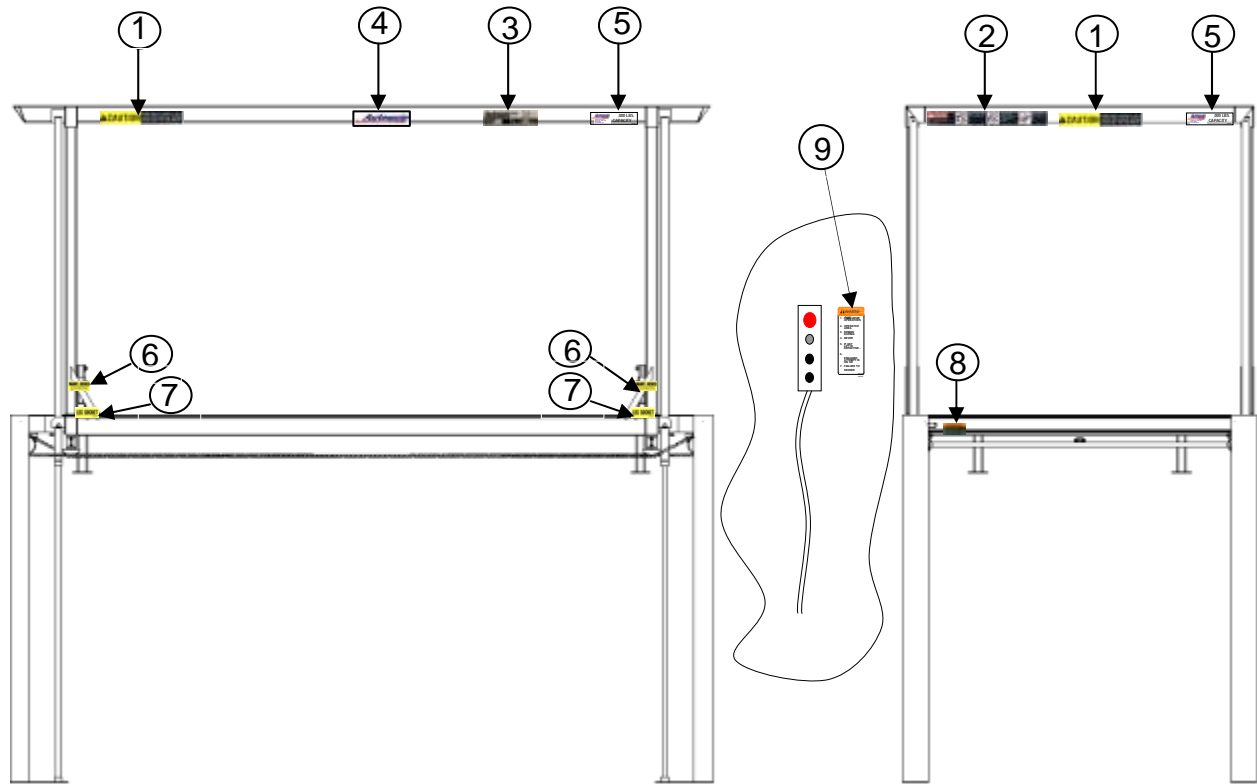


Figure 1 Label Placement Diagram – 4-Post

4-Post Subterranean Lift			
Item No.	Qty	Description	Part No.
1	4	Caution! Familiarize Yourself With Operators Manual	36401487
2	2	Danger – Do Not Put Hands or Feet...	36430050
3	2	<i>Autoquip</i> Serial Number Nameplate	36401560
4	2	<i>Autoquip</i> Logo	36403225
5	4	Capacity	36401594
6	4	Maintenance Device	36400257
7	4	Maintenance Device Socket	36400265
8	1	WARNING! Do Not Tamper	36405695
9	2	Operator Warning Placard (shipped loose)	36403993

LABEL IDENTIFICATION

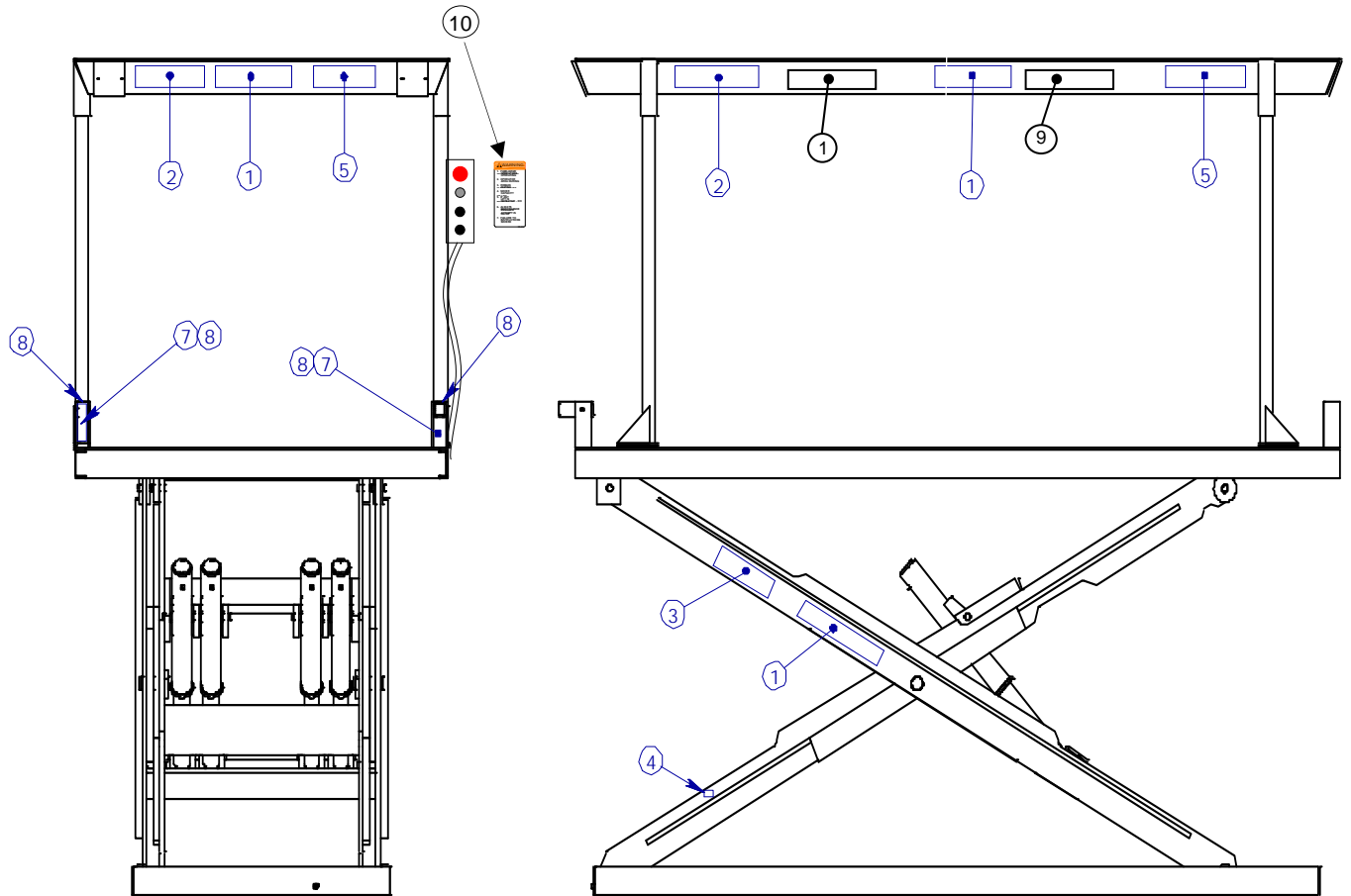


Figure 2 Label Placement Diagram - Scissors

Subterranean Scissors Lift			
Item No.	Qty	Description	Part No.
1	5	Caution! Familiarize Yourself With Operators Manual	36401487
2	4	Danger – Do Not Put Hands or Feet . . .	36430050
3	2	<i>Autoquip</i> Serial Number Nameplate	36401511
4	2	UP – STOP Valve Warning	36401610
5	4	Capacity	36401594
7	4	Maintenance Device	36400257
8	8	WARNING! Do Not Tamper	36405695
9	2	<i>Autoquip</i> logo	36403225
10	2	Operator Warning placard (shipped loose)	36403993

OPERATING INSTRUCTIONS

Congratulations! You have just purchased the highest quality personal parking lift in the world. This lift is designed and manufactured to provide you with many years of durable, dependable service and parking convenience.

1. SECURITY KEY SWITCH

The standard controls package features a manual key switch station mounted in the vicinity of the Pushbutton station. A set of keys were provided with this security station, these keys should be stored away from the lift out of the reach of children whenever the lift is not being operated. The key needs to be simply turned and left in the “On” position for the duration of the lift operation. To remove the key, turn it to the “Off” position and pull it free of the station. The lift will not run without a key turned to the “On” position.



2. DIGITAL SECURITY KEY PAD

The standard controls package also includes a digital key pad to further ensure that the lift will not be operated by children or other unauthorized users. The key pad will require that you set up an authorization code (see key pad manufacturer’s instruction manual for set up and/or changing of this code). This code should not be shared with children or displayed in the area of the lift, and can be changed as needed. The lift will not run without the digital code entered, and must be re-entered if the lift is left idle for more than approximately 5 minutes.



3. OPERATOR PUSHBUTTON STATION

The operator pushbutton station includes “Up” and “Down” pushbuttons which must be pushed/depressed throughout the entire Up and Down cycles of lift operation. These buttons are designed to be “fail safe” – in that the lift will immediately stop should you remove your finger from the button for any operational or safety concern. Continue to hold the button until the lift completely finishes its movement either up or Down, the lift will automatically stop at the fully raised and fully lowered positions.



CAUTION!

If the lift motor does not stop instantly when the lower platform reaches the garage floor level, this means the Up limit switch has failed or is malfunctioning. Stop using the lift immediately and contact your Autoquip representative for service. It is not safe to operate the lift until this malfunction has been corrected.

OPERATING INSTRUCTIONS

4. EMERGENCY STOP BUTTON(S)

Emergency Stop “Panic” mushroom button(s) are placed in areas outside the line of site of the lift operator – typically in the basement area. Press the red emergency stop button to stop movement of the lift in the event of a safety or operational concern. Lift operation may not resume until the particular safety or operational concerns are addressed and the “E-stop” button has been reset (twist & pull out).



5. PLACING VEHICLES ON THE LIFT

These loading guidelines are intended to provide you general, safe loading principles that you can apply to your specific vehicle placement application. This manual can not anticipate every possible vehicle loading issue you may encounter. YOU are responsible for using good judgment in operating this equipment and must take the time to analyze each load for safety risks. There are also optional visual and/or physical aides that can be purchased to help simplify and ensure correct vehicle placement.

Follow these basic rules when loading either lift platform to avoid accidents or injuries:

- a. Always keep the vehicle completely inside the perimeter of the lift's platform
- b. Never raise or lower vehicles with the vehicle doors open
- c. Never raise or lower vehicles that have not been placed in “Park” or otherwise have been braked or blocked to prevent wheels from rolling
- d. Never place any type of load on the lift that is unstable or that can tip or roll during lift movement
- e. Never exceed the load rating of the lift – with either transported or parked vehicles

Again, the perimeter of the lift platform defines the limits of the load placement, the loads should NEVER extend outside this perimeter! If it does, it is likely to get caught between the lift and the garage floor opening and become jammed or unstable. Unstable loads can cause serious injury or death to bystanders.

6. THE LIFT OPERATING ZONE

The areas directly above and directly beneath the lift's parking surfaces - from the basement floor to the garage ceiling - is considered to be the “lift operating zone”. This zone, as well as the areas immediately surrounding the perimeter of this zone, must be kept clear to provide a safe operating area in which to load and unload vehicles onto the lift platforms. It is the operator's responsibility to ensure that all people and objects are well clear of the operating zone before he or she operates the lift!

NOTE: You can purchase a “Vehicle-Present Sensor” which is designed to prevent a parked vehicle on top of the lift canopy from being inadvertently lifted Up into contact with the garage ceiling.

OPERATING INSTRUCTIONS



WARNING!

To prevent unintended or unauthorized lift operation, you must turn the security key switch to “Off” and remove the key when not in use! Unintended or unauthorized lift operation could cause the platform to move Up or Down within the “platform operating zone” unexpectedly.

7. LIFT OPERATION PROCEDURE

The following procedures give you a step-by-step sequence for operating the standard 4-Post subterranean lift for typical residential vehicle parking applications. Use these procedures observing all Operator Safety Rules and all other safety precautions taught in this manual.

Procedure A: Removing a Parked Vehicle from the Basement Level

- A1. Remove vehicle parked from the top canopy at garage level (when applicable)
- A2. LOOK to ensure that lift operating zone is clear of all obstructions – at both levels
- A3. Close all doors leading into the lift area
- A4. Place key into security key switch station and turn to “On” position
- A5. Make sure surveillance camera is on and that lower level operating area is clear
- A6. Press and hold “Up” button. Once pressed, it will take approximately 2 seconds for audible alarm to begin sounding and lift movement to begin – so keep holding
- A7. WATCH the operating zone at both levels throughout the lift’s vertical travel
- A8. Continue to press the “Up” button until the lower platform stops at the garage level
- A9. Enter vehicle and safely remove from the lift carriage
- A10. To lower lift into the basement area, follow Procedure B
- A11. To leave lift in raised fully raised position, turn key to “Off” position and remove from the security key switch station to store in remote area out of reach of children



WARNING!

The lift should never be left unattended in any other position other than fully raised or fully lowered – to minimize exposure to an opening in the floor.

OPERATING INSTRUCTIONS

Procedure B: Placing Vehicle onto Lift Carriage and Sending to Basement Level

- B1. Park vehicle onto carriage
- B2. Exit vehicle, ensure that no portion of the vehicle is overhanging the perimeter of the platform
- B3. LOOK to ensure that lift operating zone is clear of all obstructions – at both levels
- B4. Close all doors leading into the lift area
- B5. Place key into security key switch station and turn to “On” position
- B6. Make sure surveillance camera is on and that lower level operating area is clear
- B7. Press and hold “Down” button. Once pressed, it will take approximately 2 seconds for audible alarm to begin sounding and lift movement to begin – so keep holding
- B8. WATCH the operating zone at both levels throughout the lift’s vertical travel
- B9. Continue to press the “Down” button until the lift automatically stops (when the canopy deck lowers into and even with the garage floor opening)
- B10. Enter vehicle and safely remove from the lift carriage (when applicable)
- B11. To raise carriage to the garage floor level, follow Procedure A
- B12. Turn key to “Off” position and remove from the security key switch station to store in remote, safe area out of reach of children



WARNING!

Always LOOK to make sure no one is standing on, near, or below the lift before lowering the lift platform.

GENERAL MAINTENANCE



DANGER!

Qualified personnel only! Only qualified service personnel should perform all maintenance and repair procedures beyond general maintenance items.

All maintenance and inspection can be safely performed only with the lift in the fully raised (on the maintenance devices) or fully lowered (on the landing legs) positions. See Installation and Service Manual (available for download).

PLANNED MAINTENANCE PROGRAM

A local *Autoquip* representative provides a Planned Maintenance Program (PMP) for this equipment using factory-trained personnel. Call a local representative or *Autoquip* Customer Service at 1-888-811-9876 or 405-282-5200 for more information.

1. HYDRAULIC OIL

NOTICE !

It is very important to use the proper oil in the operation this lift. Use of improper oil will VOID the lift warranty.

Vehicle Lifts operate efficiently utilizing high quality 5W or 10W Viscosity Motor Oil products that are readily available in all locations around the country. These oil products contain additives that are desirable for optimum performance of the equipment.

NOTE: The unit must be fully lowered when checking the level of, or especially when filling, the power unit reservoir – to prevent over-filling.

DO NOT USE:

- Automatic Transmission Fluid (ATF)
- Hydraulic Jack Oil
- Hydraulic Fluids
- Brake Fluids

When in doubt as to whether your hydraulic fluid is compatible with the lift system, it is always best to contact **Autoquip** Customer Service for approval before filling!

NOTICE !

Do not run the hydraulic power unit dry. Damage to the pump and motor may result.

GENERAL MAINTENANCE (cont'd)

2. REGULAR INSPECTIONS

The following is a basic inspection schedule designed to help ensure that your parking lift is operating correctly, and to identify potential problem areas that should be inspected further by a qualified service representative. Lift installed in more severe environments - outdoors (rain, ice), near the ocean (salt), etc. – may require more frequent inspection of structural & mechanical components:



DANGER!

Troubleshooting and maintenance on the lift should only be performed by qualified service technicians!!

Each Month :

- Check hydraulic fluid level. Note: With lift fully lowered, fluid level should be approximately 1-1/2" from top of tank. **DO NOT OVERFILL**
- Check for hydraulic fluid leaks
- Check all hydraulic hoses and electrical cords for cracks, abrasions, twisting, etc. Small leaks at connections can be remedied by tightening connections or replacing the faulty component.
- Check all pivot joints, roller bearings, for noise and wear.
- Check overall condition of unit (i.e. bends, breaks, loose or missing screws, metal shavings on floor, etc.).
- (4-Post only) Check to be sure that all equalization chains beneath the lower platform are properly engaged with their respective drive sprockets. Call a qualified service technician immediately if chains are broken or have come loose from their designated chain path.

Every Six Months :

- Check quality of hydraulic fluid, replace if discolored (oxidized), cloudy, or otherwise contaminated. **DO NOT OVERFILL**. Always use clean fluid. Never return fluid from drip pans, pit, etc. back to reservoir. Dispose of and handle used fluid as a hazardous material. Always change filters when changing oil.
- Check lift cylinder rods for scoring and leaking. Wipe any foreign material from cylinders.
- Check all structural and mechanical components for cracked, or broken welds and any distortion caused by collision, overloading, or other misuse.
- (4-Post only) Check the plastic wear pads mounted to the outside of each corner of the lower platform. Call a qualified service technician if there is less than 1/4" of pad material remaining.
- (4-Post only) Grease the shaft bearings located beneath the lower vehicle platform at the front and rear of the lift with light grease. The grease fittings are located on each bearing housing (total six) **as shown in Fig. 3**.

GENERAL MAINTENANCE (cont'd)

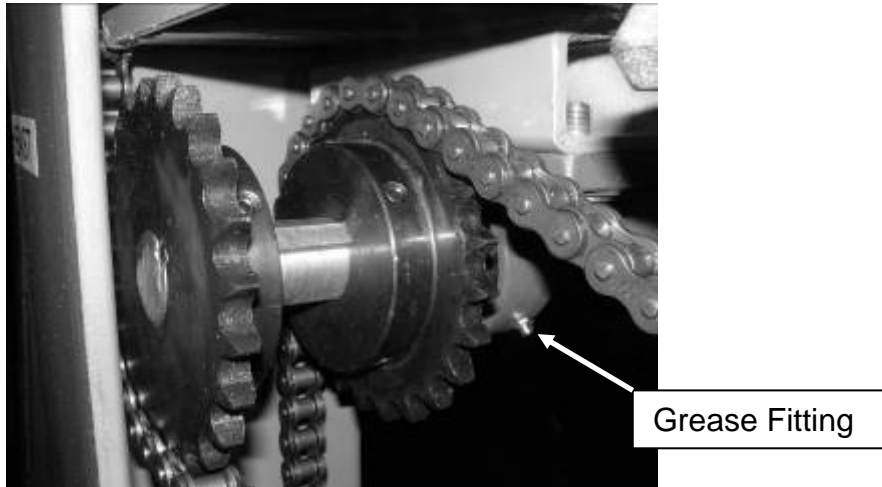


Figure 3 Shaft Bearing Lubrication – 4-Post Style Lifts

When all above checks have been completed start unit and operate through all functions. Inspect all components for signs of noise, vibration, erratic movement, and any other abnormal behavior.

Once per Year :

- Change hydraulic fluid and clean reservoir. Never return fluid from drip pans, pit, etc. back to reservoir. Dispose of and handle used fluid as a hazardous material.
- Replace all filters.
- Raise lift platform approximately 24 inches. Note exact distance from floor level to top of platform (round off to nearest 1/16 inch). Leave idle for 15 minutes. Check distance again. If any movement is measured, call a qualified service technician to make repairs as required.
- (4-Post) Tighten all equalization chains located beneath the lower platform per instructions in the Installation and Maintenance manual.

GENERAL MAINTENANCE (cont'd)

657-5000-1

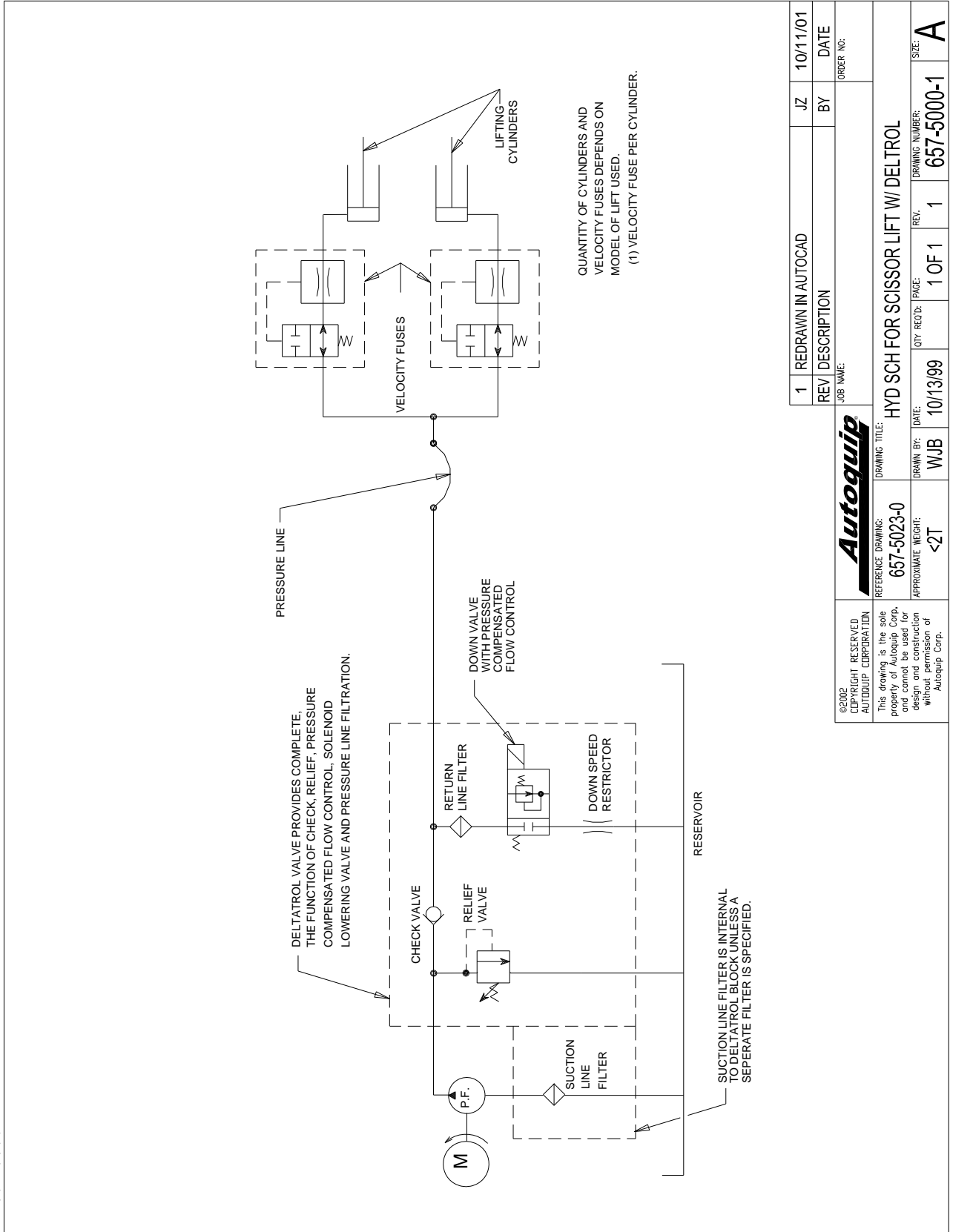


Figure 4 Generic Hydraulic Schematic
(always refer to the job-specific schematic shipped with the lift)

1	REDRAWN IN AUTOCAD	JZ	10/11/01
REV	DESCRIPTION	BY	DATE
JOB NAME:			
Autoquip			
©2002 COPYRIGHT RESERVED AUTOQUIP CORPORATION	REFERENCE DRAWING: 657-5023-0	DRAWING TITLE: HYD SCH FOR SCISSOR LIFT W/ DELTROL	DRAWING NUMBER: 657-5000-1
This drawing is the sole property of Autoquip Corp. and cannot be used for design and construction without permission of Autoquip Corp.	DATE: 10/13/99	DRAWN BY: WJB	REV. ORDER NO.:
APPROXIMATE WEIGHT: <2T	QTY REQD: 1 OF 1	PAGE: 1	SIZE: A

REPLACEMENT PARTS

Do not operate this equipment with damaged, substandard, defective, or missing parts. Contact a local *Autoquip* service representative if a deficiency is found.



DANGER!

To avoid personal injury, NEVER go under the lift platform until the load is removed and the scissors mechanism is securely blocked in the open position. See "Lift Blocking Instructions" section.

	Operator UP/DOWN Pushbutton Station
	Security Key Switch Station
	Up-Travel Limit Switch Kit
35980140	Ultrasonic Parking Indicator
36203700	Digital Keypad
36203505	Emergency Stop Pushbutton
35980160	Security Camera System
35980161	Extra Security Camera
35400840	Lift Motion Audible Alarm (24VDC)
35400760	Lift Motion Flashing Light (24VDC)
34320630	Photoeye (Vehicle Present and Side Guard)
34320631	Photoeye Reflector
35106471	Overhead Door Interlock Kit
35903630	Overhead Door Interlock Latch
35106475	Single Door Interlock
36203707	Motion Detector
35100930	Single Door Status Switch
35100920	Overhead Door Status Switch
64311620	7.5HP-230VAC-1PH Power Unit (6GPM) 40 AMPS
64311280	10HP-230VAC-1PH Power Unit (8GPM) 50 AMPS
64301585	5HP-230VAC-3PH Power Unit (4.5GPM)
30601410	5HP 1PH to 3PH Converter

TROUBLESHOOTING



DANGER!

Troubleshooting and maintenance on the lift should only be performed by qualified service technicians!!

1. LIFT WILL NOT RAISE (motor not running or “humming”)

The emergency stop button may be depressed or jammed. Check all push-button stations. Repair as necessary.

The gates/doors into the lift operating zone may not be closed. Check and close.

Motion detector(s) may have tripped, need to wait approximately 2 minutes for the sensor to reset.

Other sensors which may have been purchased with the lift (“vehicle present” sensor, photo-eye sensor, etc.) may have been tripped. Eliminate the interference which may have caused them to trip.

The digital keypad security station resets itself after 5 minutes, the security code may need to be re-entered.

2. LIFT WILL NOT RAISE (motor is running or “humming”)

The load may exceed the rating. Remove the excess load.

Check for hydraulic oil leak. Correct if needed.

Check for oil shortage in the reservoir and add oil, if necessary.

Breather cap on the reservoir may be clogged. Remove and clean.

3. LIFT DOES NOT REACH UPPER LEVEL COMPLETELY

There is some sort of interference with the platform carriage, press “emergency stop” button to stop motor. Check and correct.

The load exceeds the capacity of the unit. Lower the unit, unload, and try again.

The oil level in the reservoir may be too low. Check and replace.

Upper level limit switch requires adjustment or is not working properly.

4. LIFT OPERATION IS JERKY or SPONGY

The load may exceed the stated capacity of the unit. Remove excess load.

Check for oil starvation. Fill as required per instructions in “General Maintenance” section.

TROUBLESHOOTING (cont'd)

5. LIFTS LOWERS TOO SLOWLY WITH A LOAD

Check for a pinched hose or tubing.

Oil is extremely heavy for the application or low temperature is causing a thickening of the oil (see Oil Recommendations in the General Maintenance section).

6. LIFT WON'T LOWER

The emergency stop button may be pressed or jammed Check and repair.

The gates/doors into the lift operating zone may be open. Close and try again.

Motion detector(s) may have tripped, need to wait approximately 2 minutes for the sensor to reset.

Other sensors which may have been purchased with the lift ("vehicle present" sensor, photo-eye sensor, etc.) may have been tripped. Eliminate the interference which may have caused them to trip.

The digital keypad security station resets itself after 5 minutes, the security code may need to be re-entered.

VASARI™ LIMITED WARRANTY

The user is solely responsible for using this Equipment in a safe manner and observing all of the safety guidelines provided in the Owner's Manual and on the warning labels provided with the lift. If you are unable to locate either the manual or the warning labels, please contact Autoquip or access www.vasari-lifts.com for replacement downloads or information.

Autoquip Corp expressly warrants that this product will be free from defects in material and workmanship under normal, intended use for a period of Two (2) Years for all electrical, mechanical, and hydraulic components, parts or devices, and warrants the structure of the lift against breakage or failure for a period of Ten (10) Years. This warranty includes parts and labor for the first year of the warranty period, parts only thereafter. The warranty period begins from the date of shipment. When making a claim, immediately send the dealer who sold you the unit a notice of your claim. All claims must be received within the warranty time period. The maximum liability of Autoquip under this Limited Warranty is limited to the purchase price of the Equipment.

This warranty shall not apply to any VASARI lift or parts of VASARI lift that have been damaged or broken in transit/shipping, or due directly or indirectly to misuse, abuse, vehicle impact, negligence, faulty installation, fire, floods, acts of God, accidents, or that have been used in a manner contrary to the manufacturer's limitations or recommendations as stated in the Manual, or that have been repaired, altered or modified in any manner outside of Autoquip Corp's manufacturing facility or which have not been expressly authorized by Autoquip.

Autoquip Corp makes no warranty or representation with respect to the compliance of any Equipment with state or local safety or product standard codes, and any failure to comply with such codes shall not be considered a defect of material or workmanship under this warranty. Autoquip Corp shall not be liable for any direct or consequential damages resulting from such noncompliance.

Autoquip Corp's obligation under this warranty is limited to the replacement or repair of defective components at its factory or another location at Autoquip Corp's discretion at no cost to the owner. This is owner's sole remedy. Replacement parts will be warranted for the remainder of the Equipment Warranty period or ninety (90) days, whichever is longer. Except as stated herein, Autoquip Corp will not be liable for any loss, injury, or damage to persons or property, nor for direct, indirect, or consequential damage of any kind, resulting from failure or defective operation of said Equipment. All parts used to replace defective material must be genuine Autoquip parts in order to be covered by this Limited Warranty.

Some states do not allow the exclusion or limitation of incidental or consequential damages, so those limitations may not apply to you. This warranty gives you specific legal rights and you may also have other rights which vary from state to state.